

ATLANTIC GROUP®

S O P H I A

THE PRAHRAN ARCADE

THE ICON



THE PRAHRAN ARCADE

282 Chapel Street, Prahran, 3181

ATLANTIC GROUP®

S O P H I A

T H E P R A H R A N A R C A D E

THE ICON

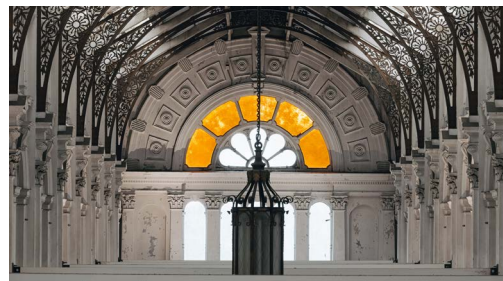
The heritage building has seen many incarnations over the decades, most recently it famously housed David Bromley's studio and home for 13 years. Today this historic Chapel St icon has been lovingly restored to its former glory to become "Sophia", a multi-faceted events space that can host every style of occasion.

Inside resides two spaces that may be used independently or together - a grand ballroom and a gorgeous space reminiscent of an art gallery. 'The Ballroom', an elegant room with ornate chandeliers and a breathtaking balcony overlooking Chapel Street. 'The Gallery', a remarkable 60 metre space punctuated by 26 arched windows which reveal the elaborate architectural works suspended high above the arcade.

Sophia epitomises the excesses of the late 19th century architecture in Victoria.

To put it simply... she is a showstopper!

Capacities	Seated	Cocktail
The Ballroom	100	180
The Gallery	208	350
Entire Venue	250	500




General and Exclusive Event Enquiries


T : +61 3 8623 9600

E : info@atlanticgroup.com.au

W : atlanticgroup.com.au

The Prahran Arcade
282 Chapel Street, Prahran, VIC 3181

 /sophia.prahranarcade

 @sophia.prahranarcade