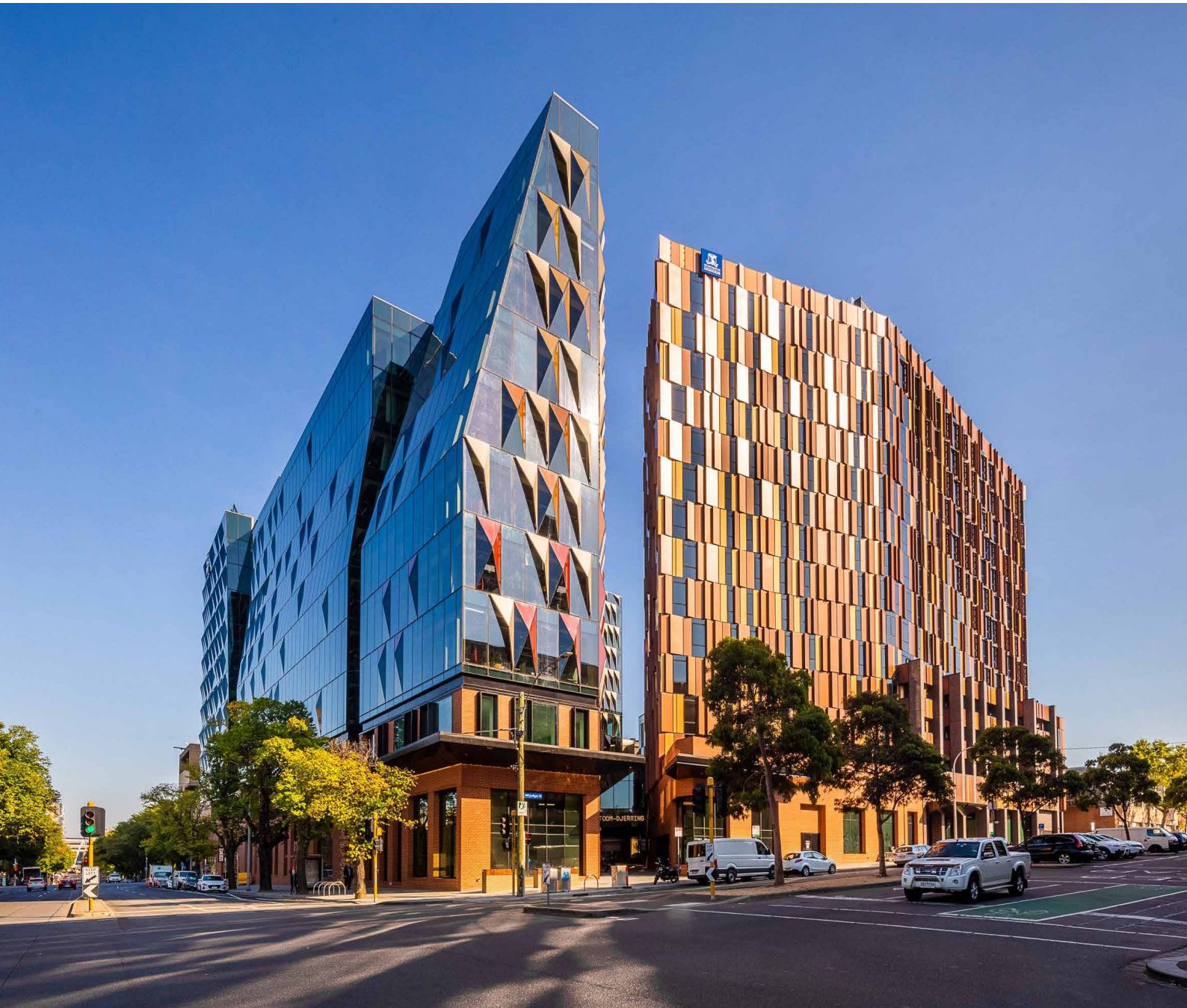


HOSPITALITY PARTNER
ATLANTIC GROUP®

MELBOURNE CONNECT

THE INNOVATOR



700 Swanston St, Carlton, 3053

MELBOURNE CONNECT

THE INNOVATOR

Melbourne Connect is an innovation precinct located in the heart of Carlton, on the doorstep of The University of Melbourne's Parkville campus.

Housing a hybrid of university and industry partners, as well as state-of-the-art postgraduate student accommodation and an Early Learning Centre onsite, Melbourne Connect is specifically designed for great minds to network and collaborate.

At the epicentre of this bustling precinct are dynamic meeting and events spaces, perfect for a variety of occasions and guest numbers.

The Forum

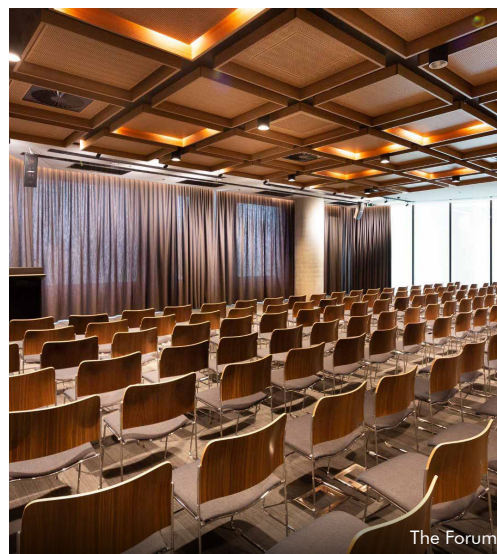
The Forum can host up to 400 people in a lecture type set up, 200 in a dining set up, or be split into three smaller rooms with 100 person capacity for events such as seminars, presentations and workshops.

Facilities rival those of a high-end purpose-built conference venue. The Forum looks into Science Gallery Melbourne's atrium gallery, providing guests with access to beautiful displays of art and cultural installations.

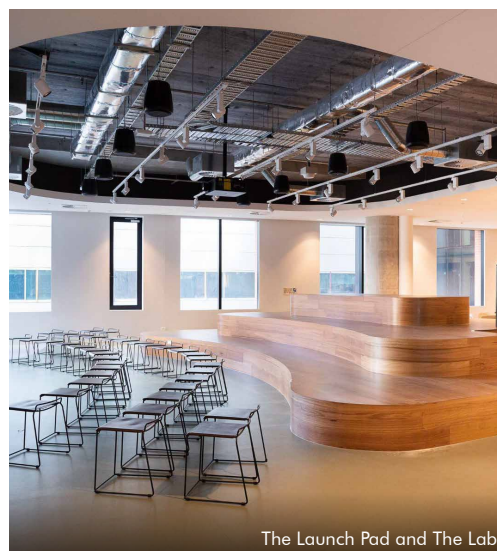
The Launch Pad and The Lab

The Lab is a mini exhibition space that sits adjacent to The Launch Pad and can be used for networking and nibbles. This versatile space is the perfect accompaniment to your Launch Pad booking, or it can be booked as an exhibition space on its own.

The Launch Pad showcases a central open plan area to facilitate ideation and knowledge sharing between guests.



The Forum



The Launch Pad and The Lab

MELBOURNE CONNECT

THE INNOVATOR

The Studio

A hireable high-traffic space with ground floor exposure at Melbourne Connect, The Studio is a flexible space for hosting workshops and group activities. Visible to passers-by, it gives a sneak peek into Melbourne Connect's energetic and dynamic community.

The Oculus

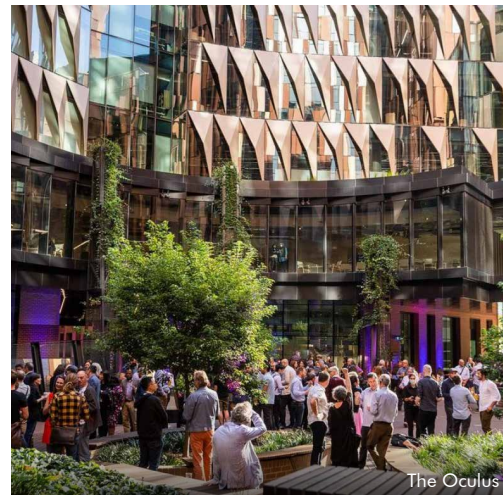
The open air Oculus space known as Womin-Djerring, which means Come Together, is available to hire for special events including a variety of activations and cocktail receptions.

**Bookings subject to precinct approval.*

The Meeting Rooms

Melbourne Connect has 16 bookable meeting and boardrooms located on the Superfloor in a variety of capacities, ranging from 4 to 32 guests. All rooms are equipped with inbuilt AV and Zoom video conferencing.

There is onsite meeting support from the Concierge Team and catering services are available through our dedicated Atlantic Group team.



Event Enquiries

T : +61 3 8623 9600
E : info@atlanticgroup.com.au
W : atlanticgroup.com.au

700 Swanston St, Carlton, 3053

Capacities	Banquet	Cocktail	Cabaret	Classroom	Theatre
The Forum	50 to 200	90 to 350	35 to 160	32 to 112	95 to 400
Launchpad	N/A	N/A	N/A	N/A	60
The Lab	40	50	N/A	N/A	N/A
The Launchpad + The Lab	N/A	100	N/A	N/A	N/A
The Studio	N/A	100	N/A	N/A	70

